

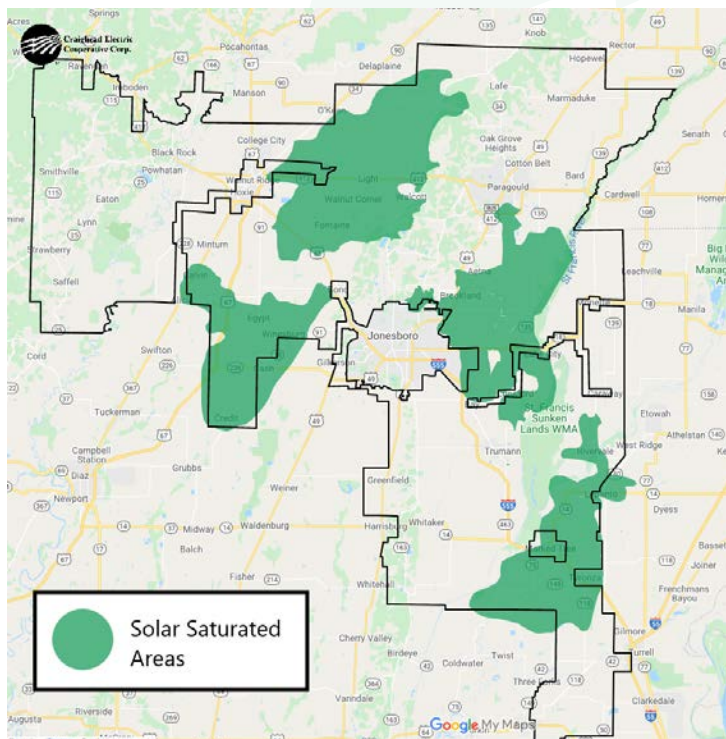
HOT LINES

Member Driven • Service Focused • It's What We Do Everyday

March // April 2022 CECC Newsletter

Solar installations reach limit in some areas

Rooftop solar is a popular energy alternative that many electric consumers are considering to generate power at home. Many farmers are utilizing some of the land usually reserved for farming crops for solar fields to power their farm operations. But as these power-generating systems are installed, some areas of Craighead Electric Cooperatives service territory have reached their limit for solar installations. Once an area has reached the set limit of distributed energy resources (or DER), that area is considered 'saturated' and no additional solar power systems can be interconnected in that area. See the map below for areas that are currently considered solar-saturated.



This does not mean that members in these areas cannot own and operate a solar panel system. One of the benefits of Craighead Electric's Net Metering

program is the fact that solar panels don't have to be installed anywhere near the meter receiving energy credits. Kilowatt-hours generated from a remote solar panel system can be credited to a member's account even if they are in a different county. As long as the solar panel system and the account receiving kilowatt-hour credits are owned by the same member, it would work the same as if the panels were on the member's roof.

Do you have questions about solar power? Talk to your trusted energy partner at Craighead Electric Cooperative at 1-800-794-5012 or send an email to memberservice@craigheadelectric.coop.

Attention Prospective Lineman

CECC's scholarship application is now available for Arkansas State University Newport's High Voltage Linemen Program! The scholarship covers the cost of tuition and books at ASUN. Applications can be found at craigheadelectric.coop/lineman-scholarship.

Applications can be returned at any of the CECC offices by April 14, 2022. Please include a copy of your transcript and 2 letters of recommendation.

Before applying for the scholarship, contact Clay Fulton (870.512.7857) at ASU Newport for a pre-entrance pole climbing exercise. For further questions about the scholarship, call our office at 870-932-8301. You can also call ASU-Newport at 1-800-976-1676 or visit asun.edu for more information.





CHANCE TO WIN \$5,000 SCHOLARSHIP!

WIN A TRIP TO WASHINGTON D.C.!

Visit Historic Monuments and Museums!

Meet students from across the country!

Meet Representatives and Senators!

YOUTH TOUR 2022
June 17-23, 2022
Washington, D.C.

The "Youth to Washington" tour gives a few lucky students the chance to spend a week in our nation's capital visiting historic sites, touring some of our most moving memorials, and browsing the campus of our nation's capital. They will also visit the Supreme Court!

Craighead electric cooperative is now accepting applications to the 2022 Youth Tour. We will send two deserving area students on an all-expense-paid chaperoned trip to Washington D.C. with 40 other Arkansas students to see our nation's capital. This is a once-in-a-lifetime opportunity.

Applicants must be high school juniors in the 11th grade in the 2021-2022 school year, their parents or guardians must be members of the electric cooperative, and they MUST be available to attend the tour on June 17th-23rd 2022. If that sounds like you or someone you know, read on for the application process!

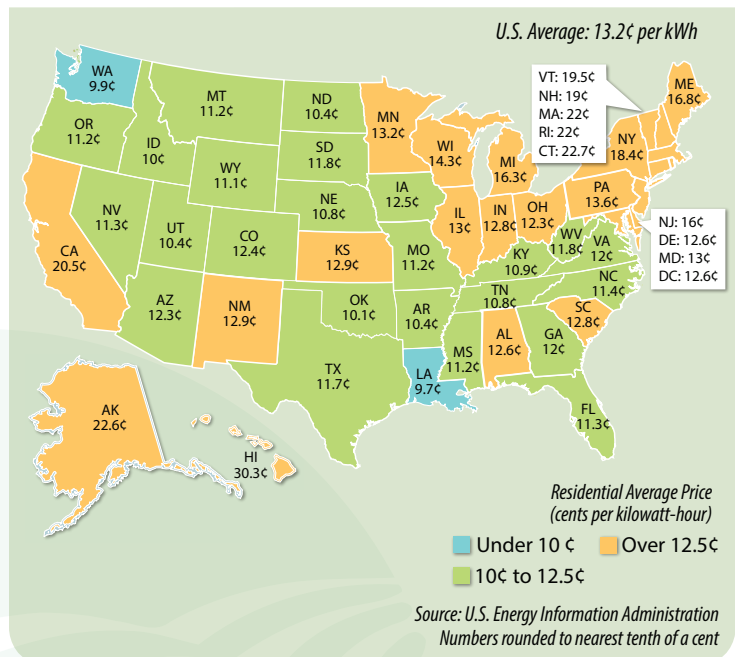
The application can be found on the Youth Tour Page at craigheadelectric.coop/youth-tour.

Download it, fill it out, and email it to youthtour@craigheadelectric.coop or drop it off at any CECC office before April 10th. Applicants will be selected by an application screening and in-person interview process.

For more information, please email the address above or call 870-336-4404.

Average Prices for Residential Electricity

2020 figures, in cents per kWh



Electricity Rates in Arkansas continue to rank among the cheapest in the nation. As a not-for-profit electric cooperative, we strive to provide electric service to our members at the most affordable rate possible.

Self-service Levelized billing in Smart Hub

You can now opt-in to Levelized billing on your own right inside the SmartHub app. Levelized billing is a free billing arrangement that allows you to pay your average electric bill each month. This helps spread out the peaks and valleys in your annual energy use doing wonders for your budget. You won't spend or save any extra money on Levelized billing, but you will rest easy knowing roughly what next month's electric bill will be.

If you have twelve months of billing history with Craighead Electric you can opt yourself in using the Levelized Billing menu in SmartHub. Learn more about what you can do with the new SmartHub portal at craigheadelectric.coop/smarthub.

